



Techtools
High Performance Power Tools



Pinze Standard ER



Spannzage ER



Collet ER

Pinze
di serraggio
ISO 6499
ISO 15488B
Standard Precision

Pinze ER DIN 6499 B / ISO15488B

Standard Precision

ISO6499B

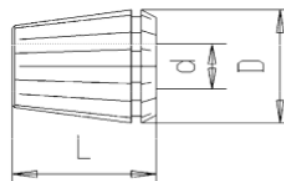
PINZE

3

PINZA ER DIN 6499 B / ISO15488B

RUN-OUT - $D_{rm} > 10\text{mm} = 20\mu\text{m max.}$

Concentricità - $D_{rm} 1-10\text{mm} = 15\mu\text{m max.}$



ER8






ER8	d	D	L	Disponibilità	CODE	Misura
ER8	1	8,5	13,5	•	TER8-1	8X1
ER8	1,5	8,5	13,5	•	TER8-1,5	8X1,5
ER8	2	8,5	13,5	•	TER8-2	8X2
ER8	2,5	8,5	13,5	•	TER8-2,5	8X2,5
ER8	3	8,5	13,5	•	TER8-3	8X3
ER8	3,5	8,5	13,5	•	TER8-3,5	8X3,5
ER8	4	8,5	13,5	•	TER8-4	8X4
ER8	4,5	8,5	13,5	•	TER8-4,5	8X4,5
ER8	5	8,5	13,5	•	TER8-5	8X5

ER11



ER11	d	D	L	Disponibilità	CODE	Misura
ER11	1	11,5	18	•	TER11-1	11X1
ER11	1,5	11,5	18	•	TER11-1,5	11X1,5
ER11	2	11,5	18	•	TER11-2	11X2
ER11	2,5	11,5	18	•	TER11-2,5	11X2,5
ER11	3	11,5	18	•	TER11-3	11X3
ER11	3,5	11,5	18	•	TER11-3,5	11X3,5
ER11	4	11,5	18	•	TER11-4	11X4
ER11	4,5	11,5	18	•	TER11-4,5	11X4,5
ER11	5	11,5	18	•	TER11-5	11X5
ER11	5,5	11,5	18	•	TER11-5,5	11X5,5
ER11	6	11,5	18	•	TER11-6	11X6
ER11	6,5	11,5	18	•	TER11-6,5	11X6,5
ER11	7	11,5	18	•	TER11-7,0	11X7
ER11	Pac.	1-7	Bas. base	•	TER-Packet	Pacchet.

Pinze
di serraggio
ISO 6499
ISO 15488B
Standard Precision

 **Pinze Standard ER**
 Spannzage ER
 Collet ER



2

ISO6499B PINZE

Standard Precision

Pinze ER DIN 6499 B / ISO15488B

ER16



ER25	d	D	L	Disponibilità	CODE	Misura
ER16	1	17	27	•	TER16-1	16X1
ER16	2	17	27	•	TER16-2	16X2
ER16	3	17	27	•	TER16-3	16X3
ER16	4	17	27	•	TER16-4	16X4
ER16	5	17	27	•	TER16-5	16X5
ER16	6	17	27	•	TER16-6	16X6
ER16	7	17	27	•	TER16-7	16X7
ER16	8	17	27	•	TER16-8	16X8
ER16	9	17	27	•	TER16-9	16X9
ER16	10	17	27	•	TER16-10	16X10
ER16	Pac.	1-10	Bas.	•	TER-Packet	Pacchet.

ER20



ER25	d	D	L	Disponibilità	CODE	Misura
ER20	2	21	31	•	TER20-2	20X2
ER20	3	21	31	•	TER20-3	20X3
ER20	4	21	31	•	TER20-4	20X4
ER20	5	21	31	•	TER20-5	20X5
ER20	6	21	31	•	TER20-6	20X6
ER20	7	21	31	•	TER20-7	20X7
ER20	8	21	31	•	TER20-8	20X8
ER20	9	21	31	•	TER20-9	20X9
ER20	10	21	31	•	TER20-10	20X10
ER20	11	21	31	•	TER20-11	20X11
ER20	12	21	31	•	TER20-12	20X12
ER20	13	21	31	•	TER20-13	20X13
ER20	Pac.	2-13	Bas.	•	TER-Packet	Pacchet.



Techtools
High Performance Power Tools



Pinze Standard ER



Spannzage ER



Collet ER

Pinze
di serraggio
ISO 6499
ISO 15488B
Standard Precision

Pinze ER DIN 6499 B / ISO15488B

Standard Precision

ISO6499B

PINZE

3

ER25



ER25	d	D	L	Disponibilità	CODE	Misura
ER25	2	26	31	•	TER25-2	25x2
ER25	3	26	31	•	TER25-3	25x3
ER25	4	26	31	•	TER25-4	25x4
ER25	5	26	31	•	TER25-5	25x5
ER25	6	26	31	•	TER25-6	25x6
ER25	7	26	31	•	TER25-7	25x7
ER25	8	26	31	•	TER25-8	25x8
ER25	9	26	31	•	TER25-9	25x9
ER25	10	26	31	•	TER25-10	25x10
ER25	11	26	31	•	TER25-11	25x11
ER25	12	26	31	•	TER25-12	15x12
ER25	13	26	31	•	TER25-13	25x13
ER25	14	26	31	•	TER25-14	25x14
ER25	15	26	31	•	TER25-15	25x15
ER25	16	26	31	•	TER25-16	25x16
ER25	Pac.	2-16	Bas.	•	TER-Packet	Pacchet.

ER32



ER32	d	D	L	Disponibilità	CODE	Misura
ER32	2	33	40	•	TER32-2	32x2
ER32	3	33	40	•	TER32-3	32x3
ER32	4	33	40	•	TER32-4	32x4
ER32	5	33	40	•	TER32-5	32x5
ER32	6	33	40	•	TER32-6	32x6
ER32	7	33	40	•	TER32-7	32x7
ER32	8	33	40	•	TER32-8	32x8
ER32	9	33	40	•	TER32-9	32x9
ER32	10	33	40	•	TER32-10	32x10
ER32	11	33	40	•	TER32-11	32x11
ER32	12	33	40	•	TER32-12	32x12
ER32	13	33	40	•	TER32-13	32x13
ER32	14	33	40	•	TER32-14	32x14
ER32	15	33	40	•	TER32-15	32x15
ER32	16	33	40	•	TER32-16	32x16
ER32	17	33	40	•	TER32-17	32x17
ER32	18	33	40	•	TER32-18	32x18
ER32	19	33	40	•	TER32-19	32x19
ER32	20	33	40	•	TER32-20	32x20
ER32	Pac.	3-20	Bas.	•	TER-Packet	Pacchet.